

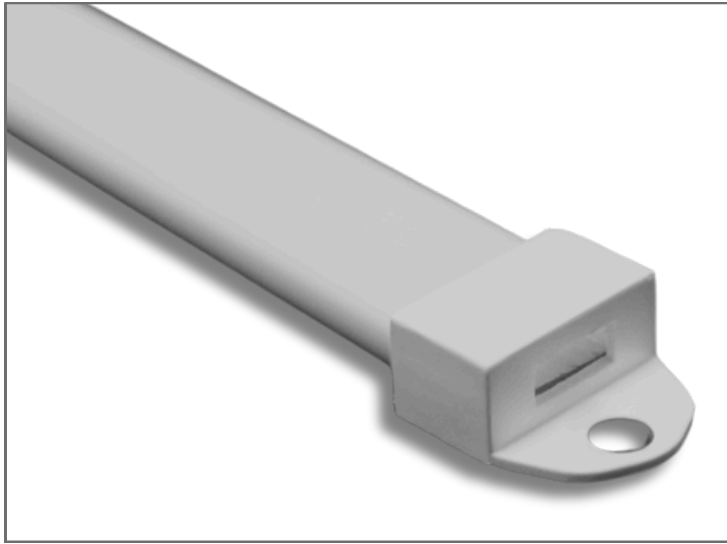
# iDea Series Channel & Lens Set

## Surface Mount Fixture

0.49 in (W) SKU: 3566-X-SET

0.56 in (W) SKU: 3633-X-SET

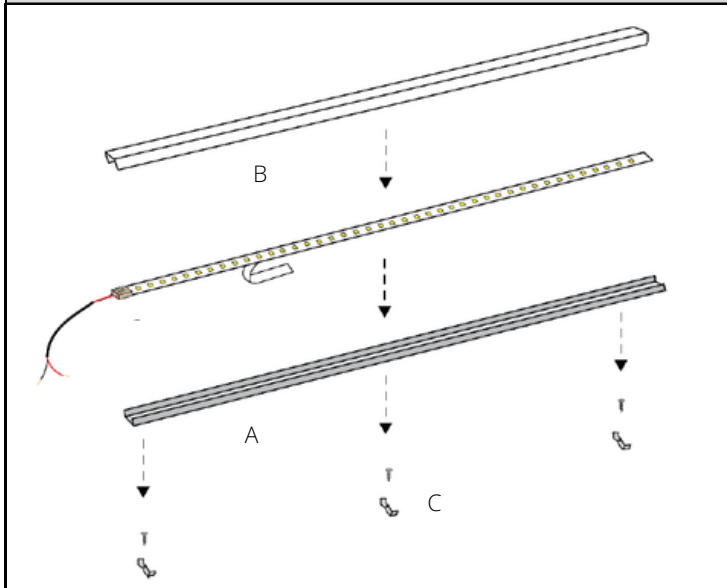
# Inspired LED



The iDea Series LED System provides a range of convenient solutions for designing, installing, and adjusting LED systems on site. Just trim the LED flex strips to the desired length, attach connectors, place the LEDs in an aluminum channel, and snap on your preferred covers. Crafting personalized LED fixtures is now simpler than ever with the innovative iDea Series LED system by Inspired LED.

Set Includes: (1) Aluminum, (1) Lens, (4) End Caps, (4) Metal Clips

### Installation Diagram



### Connector Options: (with examples)

Soldered Cable Lead <i>Upon Request</i>	
Tiger Paws <i>8mm PC Board Only</i>	
4-Screw Connectors	

### iDea Series Lens (0.49 in)

SKU:	3566-W (White) 3566-C (Clear)	
Dimensions:	72" x 0.49" x 0.2"	
Net Weight:	42g (1.5oz)	
Material:	Polycarbonate	

### iDea Series Channel (0.49 in)

SKU:	3565	
Dimensions:	72" x 0.41" x 0.14"	
Net Weight:	68g (2.4oz)	
Material:	Aluminum	

### iDea Series Lens (0.56 in)

SKU:	3633-W (White) 3633-C (Clear)	
Full Panel:	72" x 0.56" x 0.2"	
Net Weight:	45g (1.6oz)	
Material:	Polycarbonate	

### iDea Series Channel (0.56 in)

SKU:	3606	
Full Panel:	72" x 0.49" x 0.15"	
Net Weight:	80g (2.8oz)	
Material:	Aluminum	

# iDea Series Individual Components

## Surface Mount Fixture

Inspired LED

### Compatible Accessories

<u>End Cap with Hole</u>			
SKU:	4953		
Dimensions:	0.7" x 0.66" x 0.32"		
Net Weight:	1g (0.04 oz)		
Material:	ABS Plastic Polymer		

<u>End Cap without Hole</u>			
SKU:	4952		
Dimensions:	0.7" x 0.66" x 0.32"		
Net Weight:	1g (0.04 oz)		
Material:	ABS Plastic Polymer		

<u>Small Metal Mounting Clips</u>			
SKU:	3567 (10-Pack) <i>Screws Included</i>		
Dimensions:	0.6" x 0.54" x 0.35"		
Net Weight:	0.5g (0.01 oz)		
Material:	Spring Steel		

<u>Killer Red Adhesive (sold separately).</u>				
Bron's BT3854 "Killer Red" is a transparent double-sided self-adhesive tape consisting of PET backing and a modified acrylic adhesive.				
SKU:	3551	SKU:		3550
Dimensions:	5/16" x 36 yards	Dimensions:		7/16" x 36 yards

<u>VHB Adhesive (sold separately).</u>				
3M™ VHB™ Tapes RP45(F) are double-sided pressure sensitive adhesive tapes for bonding a variety of substances including many metal, plastic and painted materials. All tapes come as standard with a paper or polyethylene film layer.				
SKU:	3590	SKU:		3591
Dimensions:	3/8" x 36 yards	Dimensions:		1/2" x 36 yards