

Light up your imagination with this DIY Cut & Connect Lighting Kit from Inspired LED! Featuring three meters of flexible LED strips, a power supply, solderless connectors, and accessories, you can transform even the most unassuming areas of your home or business into a stunning focal point. All kit components are modular and can be combined with other Inspired LED products for a complete DIY lighting system!



Normal Bright Kit: For Accent Lighting	Super Bright Kit: For Ambient Lighting	Ultra Bright Kit: For Task Lighting
<p><b>(Qty. 1) 39.4' Normal Bright Flexible LED Tape</b> Warm (3000K), Pure (4200K), Cool (6000K), Red, Green, Blue</p> <p><b>(Qty. 3) 1 AMP Power Supplies</b> 120VAC to 12VDC, 6ft cord ***Dimmable on low-voltage DC side only!</p> <p><b>(Qty. 3) In-Line On/Off Switches</b> 3.5mm inputs ***Dimmer switches sold separately (SKU 4821)</p> <p><b>(5) 3ft Interconnect Cables</b> with 3.5mm x 1.3mm plugs</p> <p><b>(10) Solderless Tiger Paw Connectors (5 pairs)</b> 3.5mm female inputs</p> <p><b>(10) Cable Clamps &amp; Screws</b> 1" x 1" with 1.2" screws</p>	<p><b>(Qty. 1) 39.4' Super Bright Flexible LED Tape</b> Warm (3000K), Pure (4200K), Cool (6000K), Red, Green, Blue</p> <p><b>(Qty. 3) 2 AMP Power Supplies</b> 120VAC to 12VDC, 6ft cord ***Dimmable on low-voltage DC side only!</p> <p><b>(Qty. 3) In-Line On/Off Switches</b> 3.5mm inputs ***Dimmer switches sold separately (SKU 4821)</p> <p><b>(5) 3ft Interconnect Cables</b> with 3.5mm x 1.3mm plugs</p> <p><b>(10) Solderless Tiger Paw Connectors (5 pairs)</b> 3.5mm female inputs</p> <p><b>(10) Cable Clamps &amp; Screws</b> 1" x 1" with 1.2" screws</p>	<p><b>(Qty. 1) 39.4' Ultra Bright Flexible LED Tape</b> Warm (3000K), Pure (4200K), Cool (6000K), Blue</p> <p><b>(Qty. 3) 5 AMP Power Supplies</b> 120VAC to 12VDC, 8ft cord ***Dimmable on low-voltage DC side only!</p> <p><b>(Qty. 3) In-Line On/Off Switches</b> 3.5mm inputs ***Dimmer switches sold separately (SKU 4821)</p> <p><b>(5) 3ft Interconnect Cables</b> with 3.5mm x 1.3mm plugs</p> <p><b>(10) Solderless Tiger Paw Connectors (5 pairs)</b> 3.5mm female inputs</p> <p><b>(10) Cable Clamps &amp; Screws</b> 1" x 1" with 1.2" screws</p>

## General Power Requirements:

Power Source	Maximum Length of LED Flex Strip Lighting			
	Normal Bright*	Super Bright**	Ultra Bright***	Mega Bright****
<b>1 Amp (12 Watt)</b>	154.5" (9.75 Watts)	75" (9.75 Watts)	42" (9.75 Watts)	39" (9.75 Watts)
<b>20 Watt Dimmable Transformer</b>	252" (15.75 Watts)	123" (15.9 Watts)	70" (15.9 Watts)	63" (15.9 Watts)
<b>2 Amp (24 Watt)</b>	312" (19.5 Watts)	150" (19.5 Watts)	85" (19.5 Watts)	78" (19.5 Watts)
<b>40 Watt Dimmable Transformer</b>	516" (32.25 Watts)	252" (32.25 Watts)	144" (33 Watts)	129" (32.25 Watts)
<b>3.8 Amp (45.6 Watt)</b>	582" (36.5 Watts)	282" (36.5 Watts)	159" (36.5 Watts)	146.5" (36.5 Watts)
<b>5 Amp (60 Watt)</b>	768" (48 Watts)	372" (48 Watts)	210" (48 Watts)	192" (48 Watts)
<b>60 Watt Dimmable Transformer</b>	768" (48 Watts)	372" (48 Watts)	210" (48 Watts)	192" (48 Watts)
<b>100 Watt Dimmable Transformer</b>	1284" (80.25 Watts)	624" (80.6 Watts)	350" (80 Watts)	320" (80 Watts)
<b>150 Watt Dimmable Transformer</b>	1920" (120 Watts)	924" (119.35 Watts)	522" (120 Watts)	480" (120 Watts)
<b>200 Watt Dimmable Transformer</b>	2568" (160 Watts)	1236" (160 Watts)	696" (160 Watts)	636" (160 Watts)
<b>300 Watt Dimmable Transformer</b>	3840" (240 Watts)	1860" (240.5 Watts)	1044" (240 Watts)	960" (240 Watts)

\*Normal Bright noticeable voltage drop after 200"

\*\*Super Bright noticeable voltage drop after 150"

\*\*\*Ultra Bright noticeable voltage drop after 105"

\*\*\*\*Mega Bright noticeable voltage drop after 100"

Strips exceeding the above measurements should be powered from the center using a Screw Terminal Mid-Connector Tiger Paw (SKU 3548) to avoid a noticeable voltage drop.

Please Note: Power requirements will vary slightly based upon system configuration, these are conservative values meant for general calculations only, contact us directly for more information on powering large or complex systems.

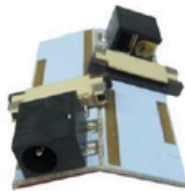
3M Kit SKUs:						
	Warm 3000K	Pure 4200K	Cool 6000K	Red	Green	Blue
Normal Bright	3785	3786	3787	3792	3794	3793
Super Bright	3782	3783	3784	3789	3791	3471
Ultra Bright	3477	3621	3478	--	--	3479

**Instructions:** To install, you will need all Cut & Connect Kit components, masking tape, a pair of scissors, and a Phillips head screw driver (if desired)

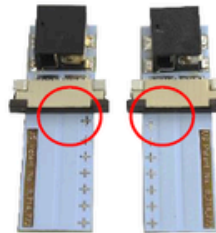
- 1** Measure desired length of LED strip and cut along copper solder pads ONLY (located every 3 or 6 LEDs)



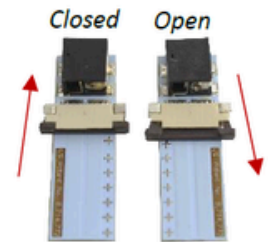
- 2** Separate Tiger Paw pair by pressing firmly along edges of board, bending until individual connectors snap apart



- 3** Make note of assigned polarities by locating the (+) symbols on connectors



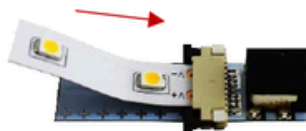
- 4** Take hold of black sliding latch and pull outward to open connector



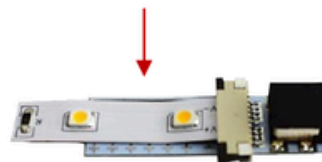
- 5** Peel adhesive about 1" back from end of LED strip, and align (+) polarity of strip to (+) polarity of Tiger Paw



- 6** Insert LED strip into gap above sliding black latch, ensure that strip is centered and fully inserted before sliding latch firmly closed



- 7** Reinforce connection by pressing and sticking the adhesive of the flexible strip to the Tiger Paw board



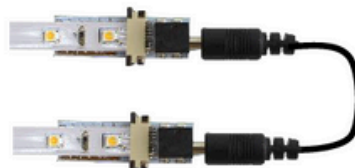
- 8** Repeat steps 3-7 to terminate opposite end of flex strip, then repeat for other pieces of flex as needed



- 9** Temporarily mount terminated LED flex in desired locations using masking or painters tape



- 10** Connect LED flex strips end to end by plugging interconnect cable into each Tiger Paw



- 11** Connect cable from first string of lights to input of switch



- 12** Connect cable from plug-in power supply to other input of switch



- 13** Plug power supply into wall outlet and turn on switch to test connections



- 14** Once satisfied with placement of LEDs, remove adhesive backing from components, and mount in place



- 15** Mount cable clamps by removing adhesive backing or by screwing into desired locations to hold back excess cable



- 16** Once finished, give yourself a pat on the back, sit back and enjoy your new lighting system!



### Wiring Diagram:

